



ANNUAL BULL SALE

Monday, April 8, 2019 - 12:00 Noon MDT

Faith Livestock - Faith, SD

Selling:

36 Yearling Registered Angus Bulls

12 Yearling 1-A Registered Red Angus Bulls

New this year, all successful bidders are entered in a drawing for a **Cross Five Cattle Cooler** to be raffled at the conclusion of the sale!

Angus genetics include:

SAV Resource 1441
VDAR Churchill 1063
B Bar Windy 7 3575
SAV West River 2066
VDAR Cedar Wind 1044
VDAR Cedar Wind 1064
GLC Huckleberry 496

GLC Resource 018



CED +3 BW +2.7 WW +70 YW +122 M +24

GLC Stetson 5388



HB 190 GM 49 CED +14 BW -1.5 WW +60 YW +102 M +30 ME +1

Red Angus genetics include:

GMRA Stetson 2240
Brown AA Prestigious B5153
CTS S Bar U Fusion 577
CTS S Bar U Tradition 468

Justin & Somer Garrigan - 16642 216th Ave. - Dupree, SD - H(605) 739-3109 - C(605) 280-9220

Riley & Cally Garrigan - 16699 216th Ave. - Dupree, SD - H(605) 739-3901 - C(605) 280-9722

Online catalog & videos available at www.garrigancattle.com



ANNUAL BULL SALE

Monday, April 8, 2019 - 12:00 Noon

Faith Livestock - Faith, SD

GLC Churchill 228



CED +9
BW +0.2
WW +66
YW +119
M +23

LOT 2

GLC Resource 028



CED +4
BW +2.5
WW +53
YW +105
M +20

LOT 9

GLC Huckleberry 488



CED +7
BW +1.1
WW +54
YW +90
M +21

LOT 22

GLC Sleep Easy 378



CED +8
BW +0.0
WW +49
YW +85
M +28

LOT 35

GLC Stetson 5838



HB +195
GM +48
CED +18
BW -4.4
WW +53
YW +90
M +31
ME -2

LOT 39

GLC West River 648



CED +8
BW -0.4
WW +54
YW +101
M +21

LOT 4

GLC Churchill 258



CED +9
BW +0.2
WW +62
YW +105
M +26

LOT 10

GLC Hercules 538



CED +4
BW +1.9
WW +50
YW +89
M +24

LOT 27

GLC Hercules 558



CED +4
BW +1.9
WW +51
YW +86
M +23

LOT 36

CCTS S Bar U Tradition 857



HB +177
GM +47
CED +10
BW +0.5
WW +47
YW +74
M +22
ME -2

LOT 41

GLC Sleep Easy 358



CED +11
BW -1.1
WW +48
YW +89
M +25

LOT 5

GLC Huckleberry 468



CED +10
BW -0.5
WW +49
YW +85
M +25

LOT 13

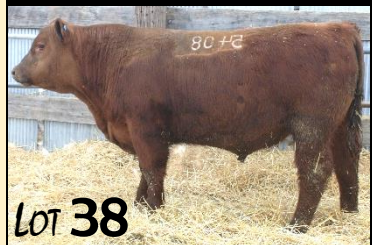
GLC Sleep Easy 348



CED +10
BW -1.6
WW +47
YW +78
M +25

LOT 30

GLC Stetson 5408



HB +183
GM +50
CED +13
BW -1.7
WW +57
YW +102
M +26
ME +0

LOT 38

CCTS S Bar U Fusion 828



HB +203
GM +46
CED +17
BW -4.2
WW +52
YW +87
M +26
ME +0

LOT 47

Justin & Somer Garrigan - 16642 216th Ave. - Dupree, SD - H(605) 739-3109 - C(605) 280-9220

Riley & Cally Garrigan - 16699 216th Ave. - Dupree, SD - H(605) 739-3901 - C(605) 280-9722

Online catalog & videos available at www.garrigancattle.com